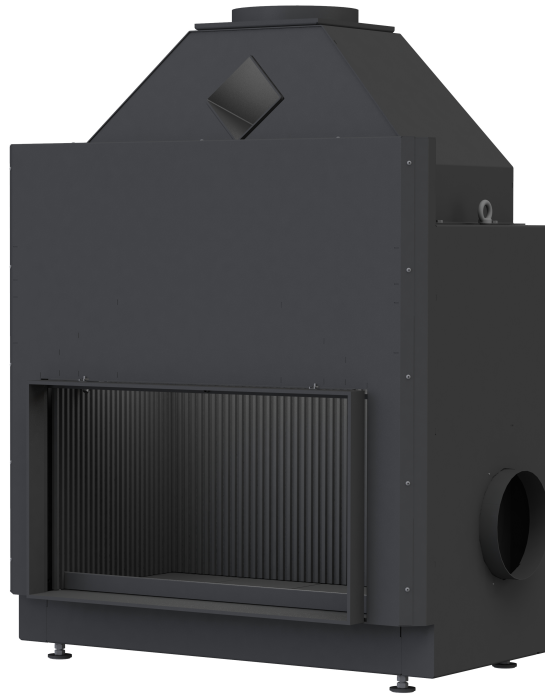


OPEN FIREPLACES FROM BRUNNER



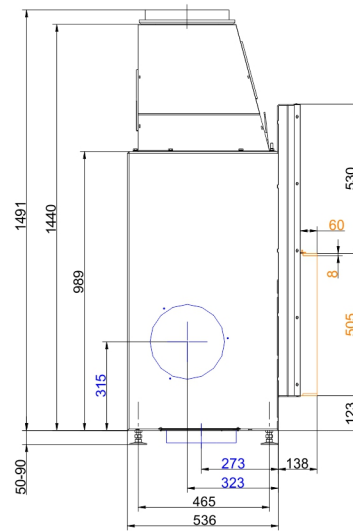
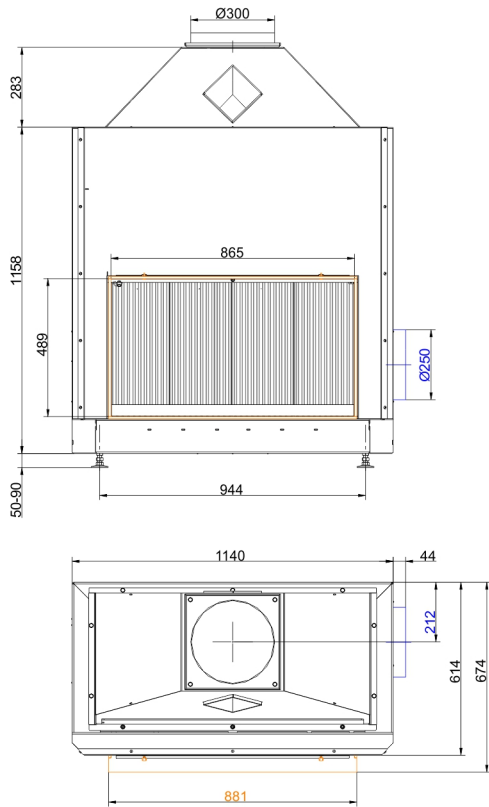
Urfeuer® 50/88

State: 2018-04-11

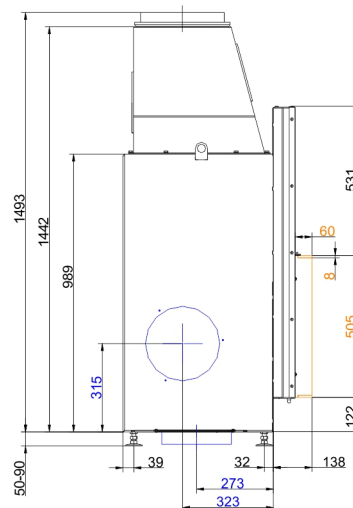
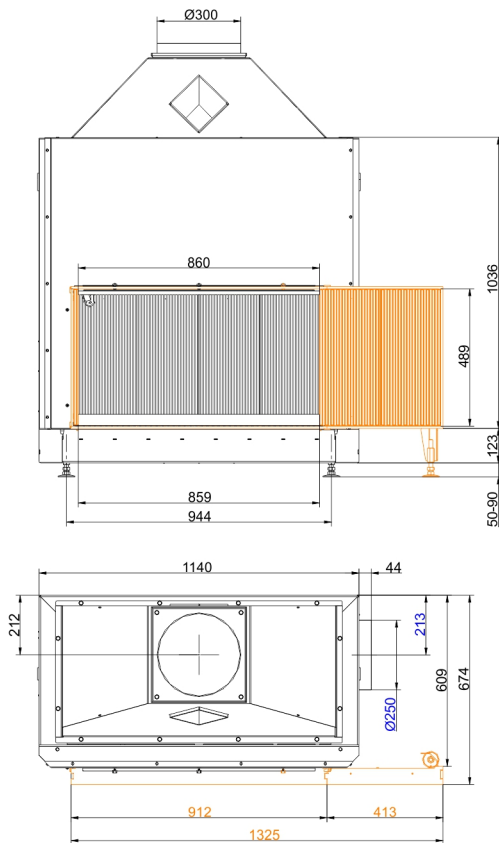


BRUNNER®
made in germany.

Dimension sheets - Urfeuer® 50/88

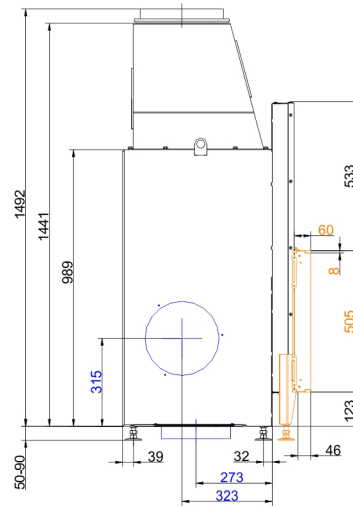
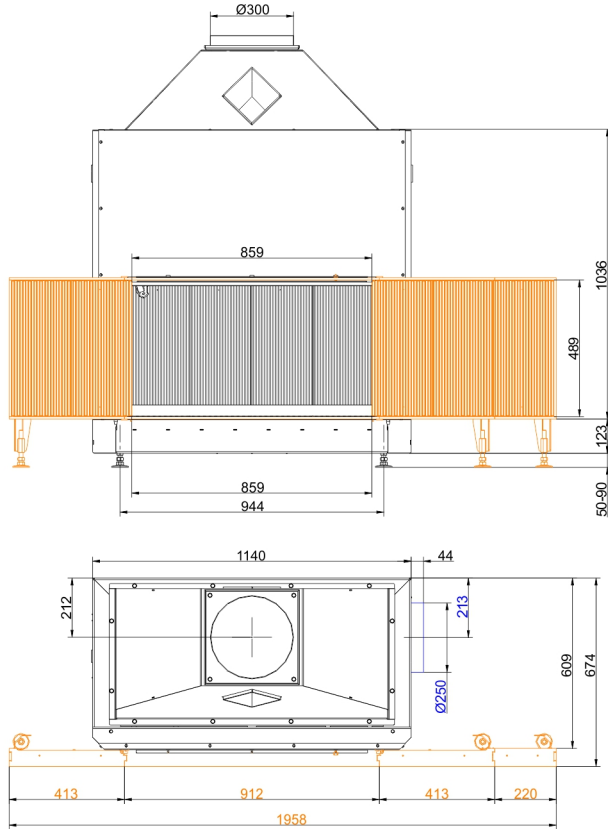


... with mounting frame

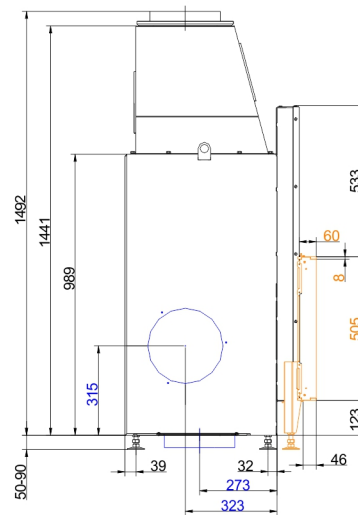
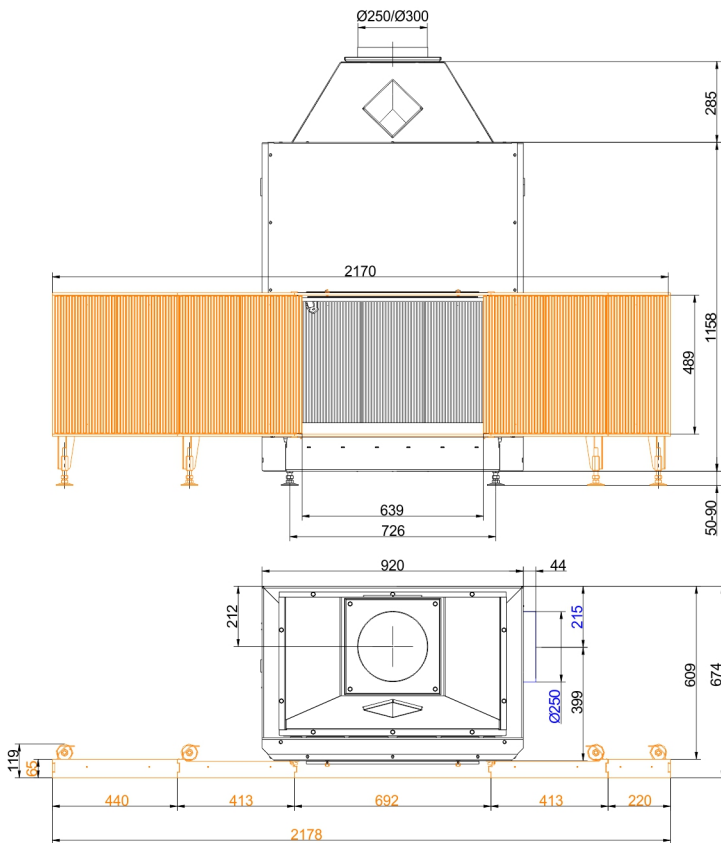


... with mounting frame R2

Dimension sheets - Urfeuer® 50/88



... with mounting frame L2 / R3



... with mounting frame L4 / R3

We suggest for CAD planing Palette CAD. Permanent updated drawings: www.brunner.de
 Frames / front versions are marked colored.

Planning and installation - Urfeuer® 50/88

Tested according to		EN 13229 W
EEI		53.5
Data for functional demonstration		
Flue gas mass flow	g/s	135
Outlet temperature	°C	110
Necessary supply pressure	Pa	6
Total fuel load	kg	2 - 4
Combustion air consumption	m³/h	252
Combustion air connection Ø	mm	250
Cross-section of gratings		
Convection air	cm²	500
Supply air	cm²	500
Min. distances of fireplace without / with convection casing		
to insulation layer	cm	6
to mounting floor	cm	2.5
Thermal insulation without / with air gratings		
Mounting wall	cm	10
Ceiling	cm	14
Brick lining for combustible wall	cm	10
Weight		
Fireplace / combustion chamber	kg	248 / 132 / -

Ulrich Brunner GmbH
 Zellhuber Ring 17 - 18
 D-84307 Eggenfeldern
 Telefonat: +49 / (0)87 21 / 7 71-0
 Telefax: +49 / (0)87 21 / 7 71-100
 info@brunner.de | www.brunner.de

BRUNNER®
made in germany.